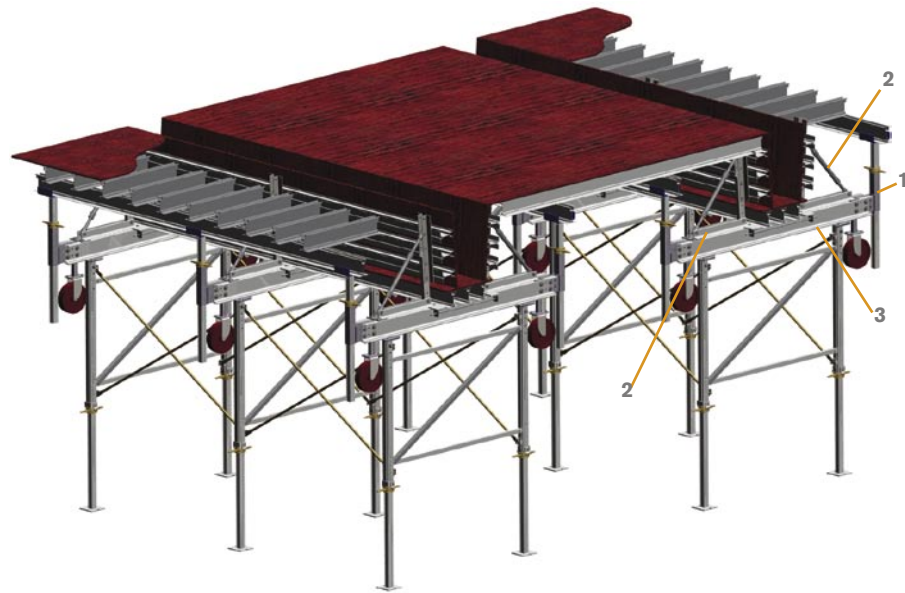


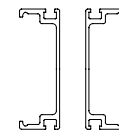
Parking Garage System



1. Garage Beam System Caster & Screw Adaptor
Supports screwjacks and casters for parking garage beam system.



2. Garage Beam System Beamside Assembly
Provides side support for concrete beams. Has min. extension of 2'-7" to a max. of 3'-4". Height is adjustable at increments of 3".

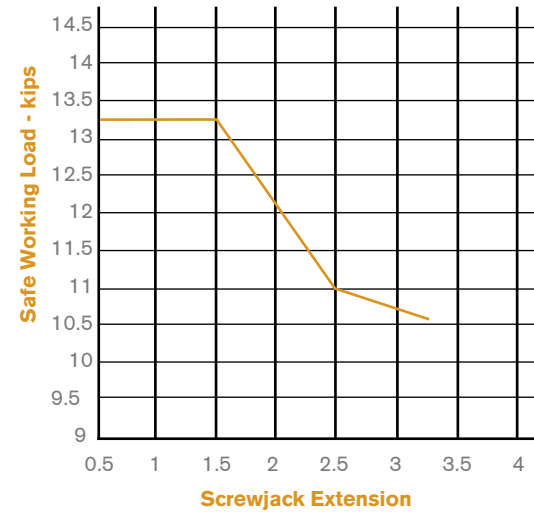
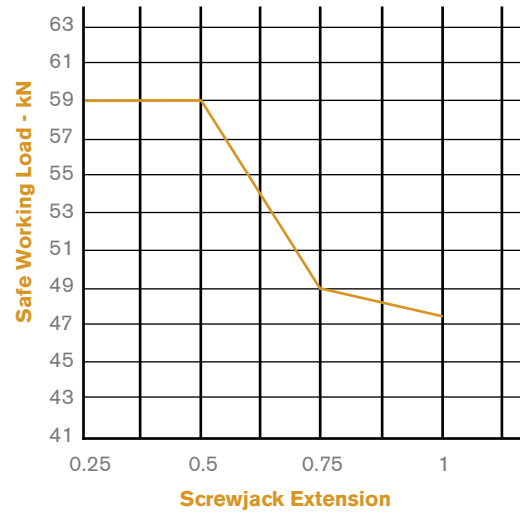


3. 55k Strongback
Strongbacks are used to support joists.

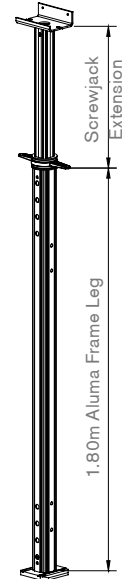
The Aluma Frame Parking Garage System converts the Aluma Frame[®] into a ledger bearing frame. With this configuration, both beam and slabs can be supported from a single table reducing the amount of equipment and labour required.

Aluma Frame Leg Post Shore Capacity

* Note: Equipment shown is for demonstration purposes only



Note:
1. Load capacity based on a 3:1 factor of safety as required in Canada & USA
2. Capacity for reference only and should not be used for design purposes.



CANADA

Calgary, AB T 403.212.4832
Ottawa, ON T 613.745.7081
Saskatoon, SK T 306.931.7888
Vancouver, BC T 604.940.3000
Edmonton, AB T 780.440.1692
Saint John, NB T 506.633.9820
St. John's, NL T 709.753.3325
Victoria, BC T 250.652.9409
Montreal, QC T 514.383.1985
Halifax, NS T 902.468.9533
Toronto, ON T 905.669.5282
Winnipeg, MB T 204.633.7072

USA

Atlanta, GA T 404.699.0979
Houston, TX T 832.226.5100
San Jose, CA T 408.238.6989
Baltimore, MD T 301.937.5090
Las Vegas, NV T 702.866.6513
Seattle, WA T 425.251.0270
Chicago, IL T 847.875.4526
Phoenix, AZ T 602.212.0350
Tampa, FL T 813.626.1133

INTERNATIONAL

International T 905.699.5282
Japan T +81.090.5797.0643
Middle East T +971.4.341.3717
Indonesia T +62.21.526.2405
Latvia/Baltics T +371.29.430.518
South East Asia T +65.6268.0375
Israel T +972.6.6769963
Mexico/S.America T +52.55.9000.3749
United Kingdom T +44.1702.232.464

Aluma Frame

Aluma Frame Product Sheet

Aluma Systems

Concrete Construction

Aluma Frame[®] System

Introduction

Increased Productivity

The 6 ft. (1.83 m) wide frame promotes an open layout, providing easier movement for workers and larger shoring coverage per leg, compared to traditional frames. Aluma Frame's[®] wider design results in 50% less components to handle over a given shoring area.

Easy To Carry

The Aluma Shoring System is easy to carry because each Aluma Frame[®] is constructed of lightweight aluminum and weighs only 42 lbs. (19kg). One man can carry a frame with base plates, screw jacks and the J-head attached; there is no need to dismantle components.

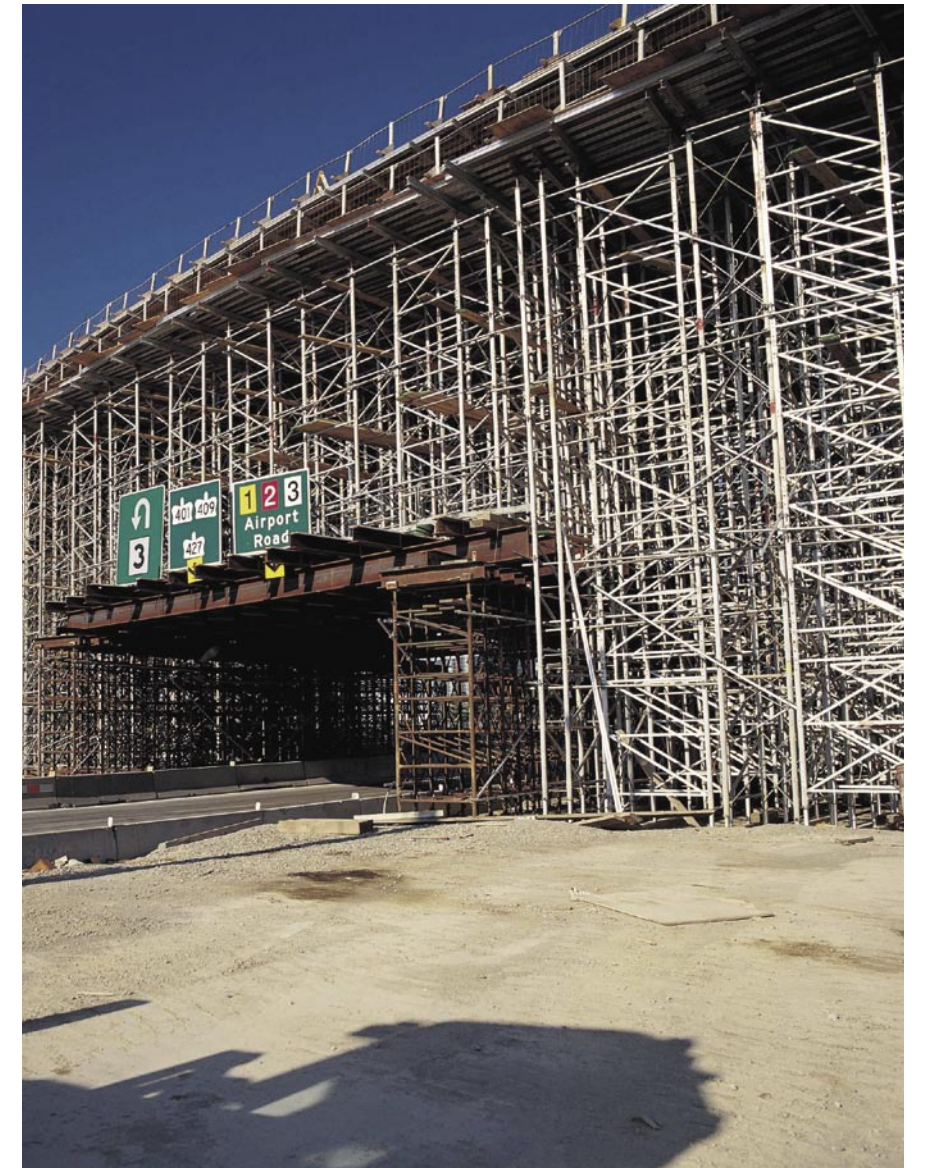
Versatility

In elevated shoring applications, the Aluma Frame[®] can be erected without a crane, saving staging time, equipment and erection labor.

The combination of multiple frame heights, screw jacks and extension staffs make reaching any height easy and economical. The Aluma Frame[®] is also used to create small flying tables in circumstances where larger Truss systems are not required.

Intelligent Design

The Aluma Frame[®] is the only mechanically connected setup shoring frame on the market today. Fast, safe and inexpensive repairs can be made on site using a wrench. The original capacity of the frame is not affected by these repairs unlike competing systems that require welding.



Safe

- Engineered by an experienced, safety-award-winning team.
- Manufactured under a tight quality control program.
- The Aluma Frame[®] System conforms to all forming regulations, including CSA, CAL-OSHA and ANSI.

Smart

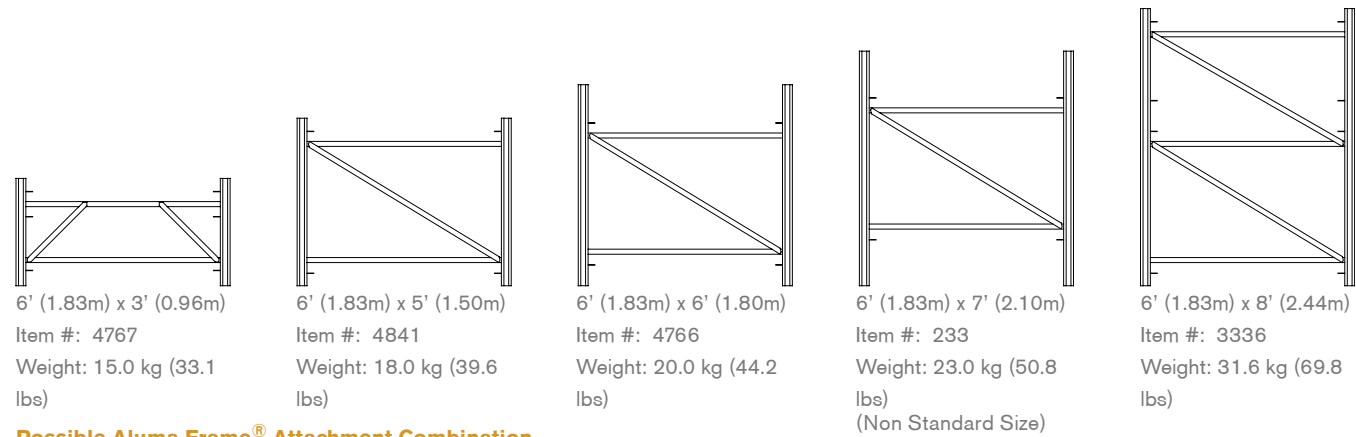
- Frame legs can be unbolted and used as post shores.
- Compatible with full range of Aluma Beams[®] and Stringers.
- Allows the use of screwjacks at the top and bottom of the table forms.

Efficient

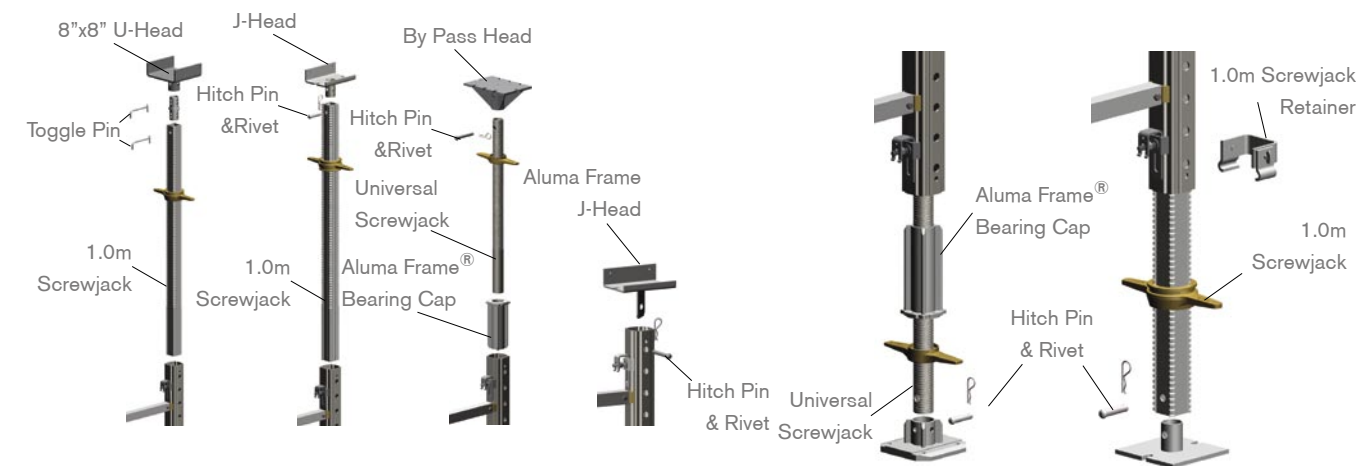
- More than 50% stronger than a 20 kip (10 kip/leg) steel frame.
- Wider frames reduce the number of shoring frames needed.
- High strength accessories provide strength & durability when required.

©2009 Brand Services, LLC All Rights Reserved. Aluma Systems is a Brand Services company. Consult our Engineering Department for assistance in the application of these accessories. Illustrations and photos are not to scale. All dimensions nominal.

Available Aluma Frame® Sizes



Possible Aluma Frame® Attachment Combination



Aluma Frame® Typical Components



Cost Effective, Flexible & Versatile



1. Aluma Frame®

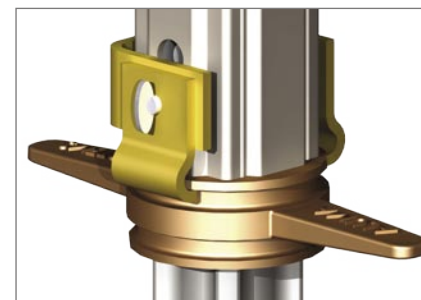
The Aluma Frame® is a light-weight, heavy-duty shoring Frame that has an increased area coverage and higher load carrying capacity than steel frames.

Made from AL 6061-T6, the Aluma Frame® is also very durable and weather resistant. Connections are bolted for easy replacement of damaged parts, thus reducing repair costs and time.

All Frames are 6' (1.83m) wide with heights starting at 3' (0.96m) all the way up to 8' (2.48m).



* Note: Equipment shown is for demonstration purposes only



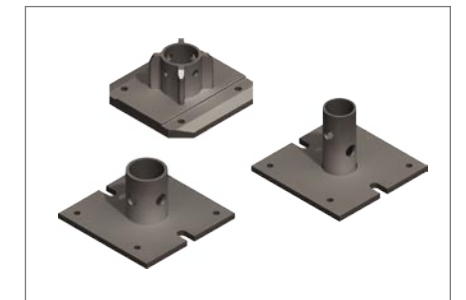
2. Screwjack Retainer

The screwjack retainer fastens the 1.0m Screwjacks in place during table flying or when the frame table is being moved by the transport dolly, thus eliminating disassembly time.



3. Top Attachments

The Aluma Frame® is compatible with a variety of Aluma attachments, such as the U-Head, J-Head, & By-Pass Head.



4. Bottom Attachments

The Aluma Frame® is compatible with a variety of Aluma attachments, such as the Aluminum Base plate, Screwjack Base Plate & Steel Base Plate.